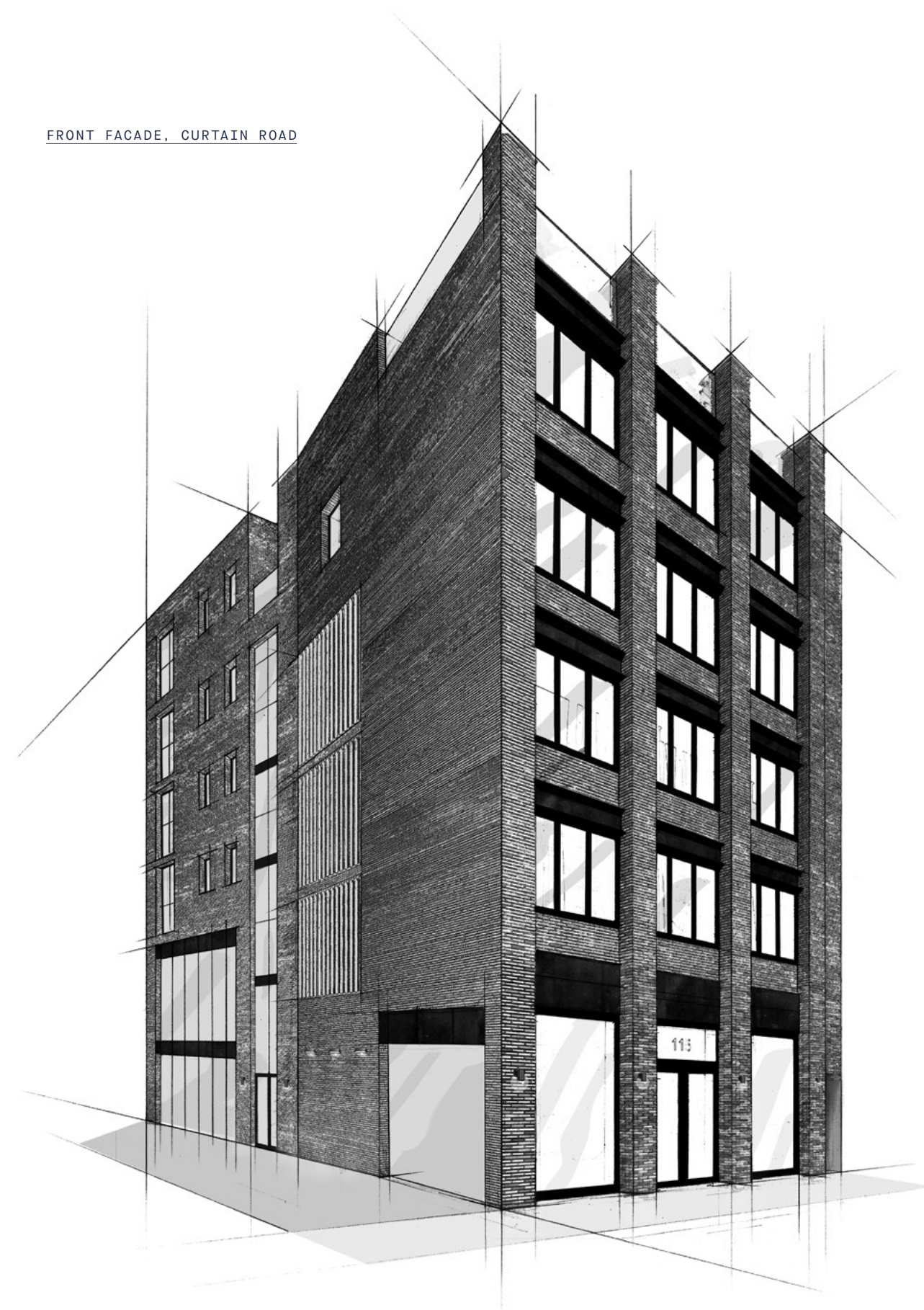


THE
HUDSON

From brass foundry to six urban dwellings, The Hudson is imbued with heritage. The legacy of Shoreditch can be felt in every detail, its industrial past reflected in the considered use of materials – all exceptionally crafted. With utmost precision. A journey from raw, to refined.

FRONT FACADE, CURTAIN ROAD





IN PURSUIT OF IMPERFECTION

From Danish clay pits, via the hands of artisans, to the textured streets of Shoreditch; the story of the Petersen brick is that of the dedicated pursuit of hand-hewn perfection. In all its imperfection.

The human touch marks a tradition that has travelled through the generations. Nestled in Denmark's Nybol Nor cove, Petersen has remained a family brickworks rooted in excellence, where every brick is celebrated for its individual character, honed to perfectly connect together.

CONTINUED

The Hudson creation team cast eyes on the process in person, resulting in a personalised blend of not one shade of brick, but three. A vibrant mix of D91, D96 and D99 that interact to build a visual ode to the stimulating urban fabric of Shoreditch.

The extraction, the crafting, the firing, and then the final journey to London. The new Hudson facade showcases the culmination of centuries of uncompromising dedication to what can be created with pure blue clay in the hands of the skilled. All handmade, no two bricks are the same.



FIRE AND WATER

Renowned for their quality, colour and texture, the coal-fired process adds contrasting light and dark shades to the water struck Petersen bricks.

VIEW 01: APARTMENT 05, LIVING SPACE

AN APPETITE FOR INNOVATION

Modulnova is the master of carefully crafting raw materials into modern, refined kitchens. Cutting through the noise of the Italian design world, the rising star of domesticity now brings its intense focus on detail, design and finish to Curtain Road.

A journey to Italy to witness the formation cast light on a contemporary company forging a progressive path. Driven to seek out new methods in technology, to source distinguished materials and apply their innovative eye to every aspect of creating the perfect kitchen.

CONTINUED



01
02
03
04
05
06

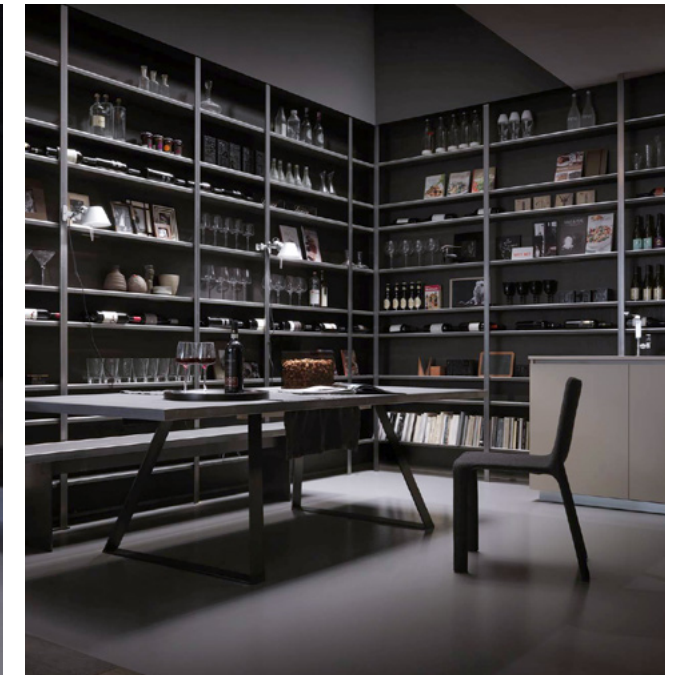
- 01 SKYLIGHT
- 02 AMBIENT EXTERNAL UP/DOWN LIGHTING
- 03 RECESSED LIGHT TO UNDERSIDE OF SHELF
- 04 BLACK STONE FEATURE BLOCK ISLAND
- 05 OVERSIZED SLIDING GLAZED DOORS
- 06 GLAZED BALUSTRADE

DESIGN c.1949

Guided by the Prosetto family who started making furniture and designing kitchens in the mid 1900s, Modulnova have been mastering essential lines for almost thirty years.

Oversized-depth worktops, crafted from 12mm thick Corian, create balance over satin lacquered base units. Open shelving systems with integrated storage pods expertly unifies design and functionality, whilst handleless fittings continue the seamless experience.

Partnering closely with Design Space London – the showroom that houses the brand – the precise vision has been exceptionally executed to compliment the space. Every line, every component individually tailored to The Hudson. Pared back, cool. This is no standard fit.



- 01 SUSPENDED TRACK LIGHTING
- 02 EXPOSED CONCRETE CEILING
- 03 OVERSIZED DOORS
- 04 CRITTALL-STYLE GLAZED SCREEN
- 05 AMBIENT RECESSED LIGHT TO UNDERSIDE OF SHELF
- 06 EXTENDED DEPTH WORKTOP
- 07 HANDLELESS KITCHEN
- 08 EXPOSED CONCRETE COLUMNS
- 09 BESPOKE TIMBER FLOORING

01

02

03

04

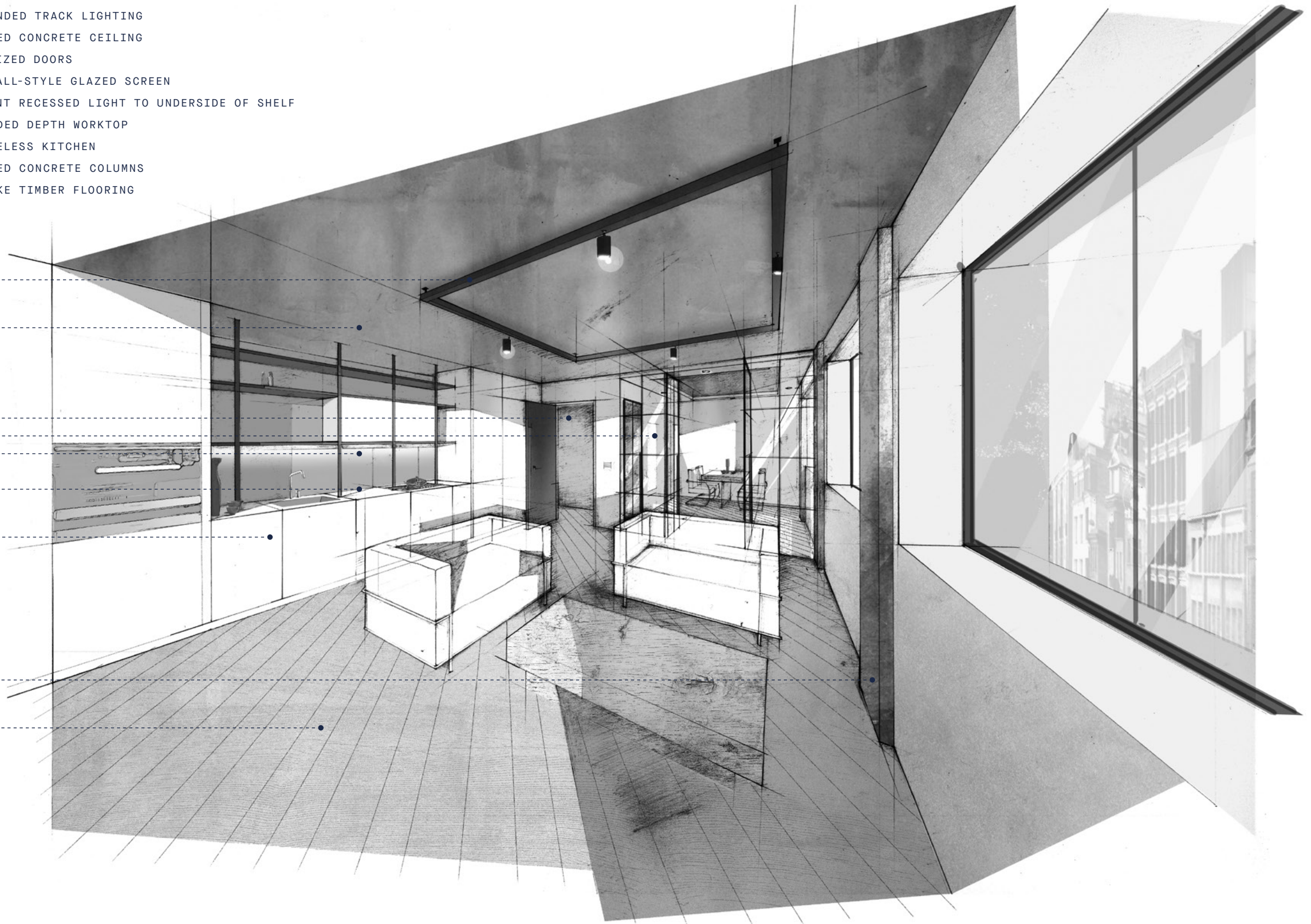
05

06

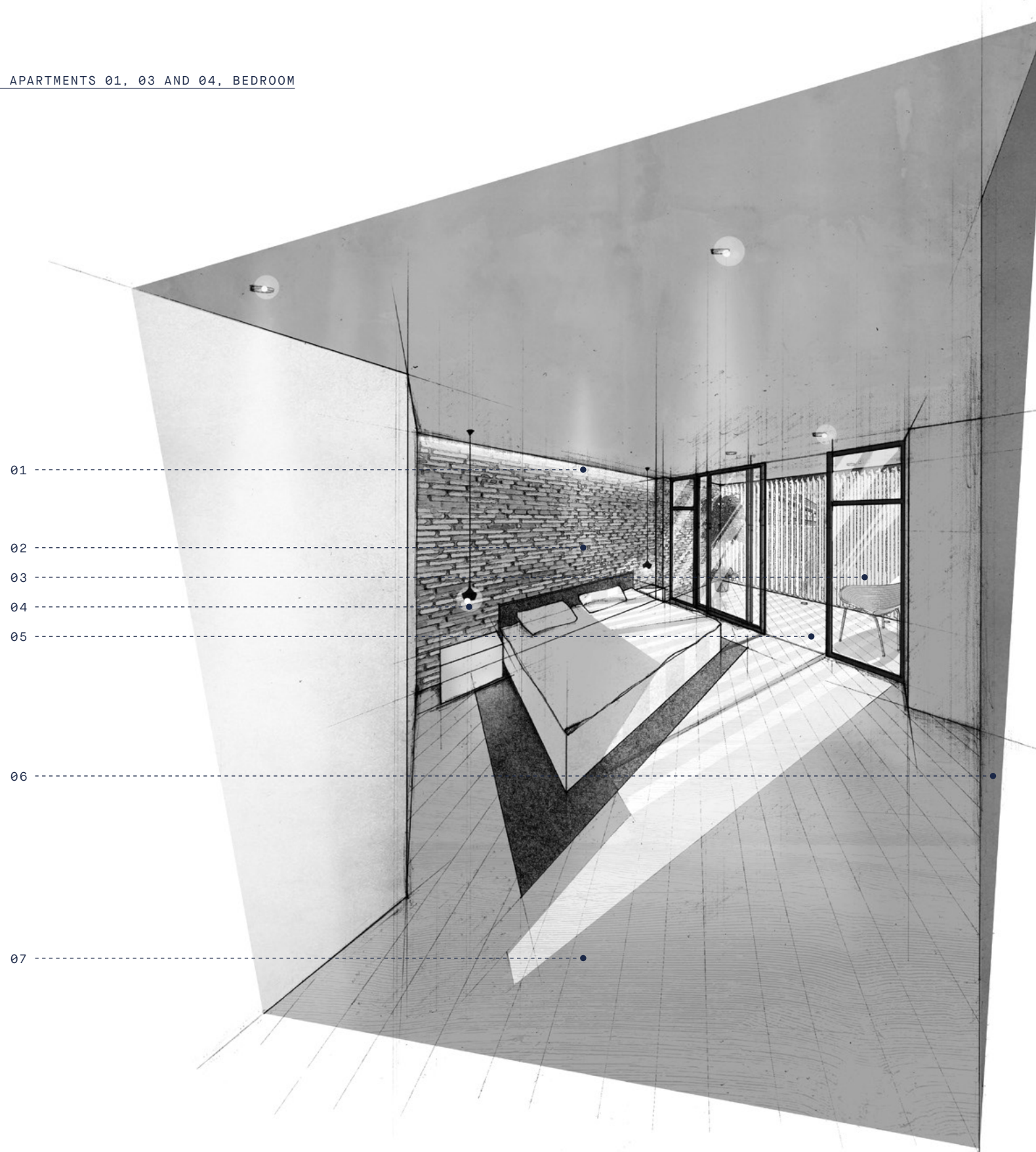
07

08

09



VIEW 03: APARTMENTS 01, 03 AND 04, BEDROOM



- 01 AMBIENT RECESSED LED CEILING LIGHT
- 02 EXPOSED BRICKWORK
- 03 OVERSIZED SLIDING GLAZED DOORS
- 04 SUSPENDED PENDANT LIGHTING
- 05 PRIVATE BALCONY
- 06 HIS AND HERS WARDROBES
- 07 BESPOKE TIMBER FLOORING

HINGED ON INTEGRITY

A decade of family business with a reputation for enduring quality, Neatsmith of London creates cabinetry built with kinship, care and craft.

Chosen with purpose to conceive wardrobes for The Hudson, their dedication to detail is second to none. Hinges and sliding mechanisms are of such high specification, they come complete with a lifetime guarantee. And the exterior a considered urban grey, finished in a deeply textural surface of embossed décor veneer. Tactile, robust.

Crafted by hand in London to phenomenally exacting standards, a Neatsmith wardrobe delivers an experience that others can't touch.



38 MINUTES WITH SHERIDAN COAKLEY

The transformation of Shoreditch is a tale often told. But who are the characters that pioneered the change? The artists? For certain. And so too SCP founder Sheridan Coakley.

Born on Curtain Road in a derelict upholstery workshop in 1985, the fledgling interiors brand evolved in symbiosis with East London's rise to fame. Now SCP stands proud as a household name with a passion for creating modern British design, beautifully made to last. Who better to partner on creating a collection of finely-conceived urban dwellings, than this internationally-respected Hudson neighbour? Here, Coakley talks craft, collaboration and contemporary design.

THE PULL OF THE EAST

"I got to know Shoreditch in the '80s. I'd come over from Notting Hill where I had a little shop and get things re-chromed on Rivington Street, which is where Lee Broom's showroom is now. I noticed this fantastic empty space with steel columns, like a New York loft – it was an upholstery factory, and really cheap because the area was deserted. Hackney Council wouldn't allow any change of use, and this was still all light industrial, so nobody could actually do anything other than make things in the area." The rise of Shoreditch artists, designers and people like me started gradually moving in and took over the area. You couldn't buy any food, you couldn't get anything, pubs closed on a Friday and they closed in the evenings, which was interesting. It was not a good place to do business from, just a great place to build things and make things. We were mainly selling abroad and to a few architects and designers. It was a very small market – the complete reverse of now. We went from being a warehouse-workshop to a showroom; an architect might come and have a look around, people would come in to buy a proper stool. Shoreditch, the world, everything changed around us."

A HUB OF CREATIVITY

"At one time people were saying that there were more designers in Shoreditch than the whole of South London. It's still regarded as a design area – not necessarily furniture designers but lots of creatives. The whole thing of it being a cultural centre is good for us and you can still get a lot done in this area. There are still people

CONTINUED

with model making facilities, people with workshops. I think Shoreditch has shaped the character of the company, the fact that all these people have grown up with us around here. It allowed us to be who we are.”

GOOD DESIGN LIVES ON

“We’ve been making the Balzac armchair for 30 years, and that shows how good design can be timeless. Upholstery can be quite interesting to develop because it’s always made in such a traditional way, with traditional materials. The most important thing is that it’s comfortable, but when it comes down to it, they’re all wooden frames with different layers of materials on top. We have a woodwork shop that makes the frames and then they’re all built by hand. Wood was good enough for the Greeks, so it’s good enough for us.”

A COLLABORATION OF TALENT

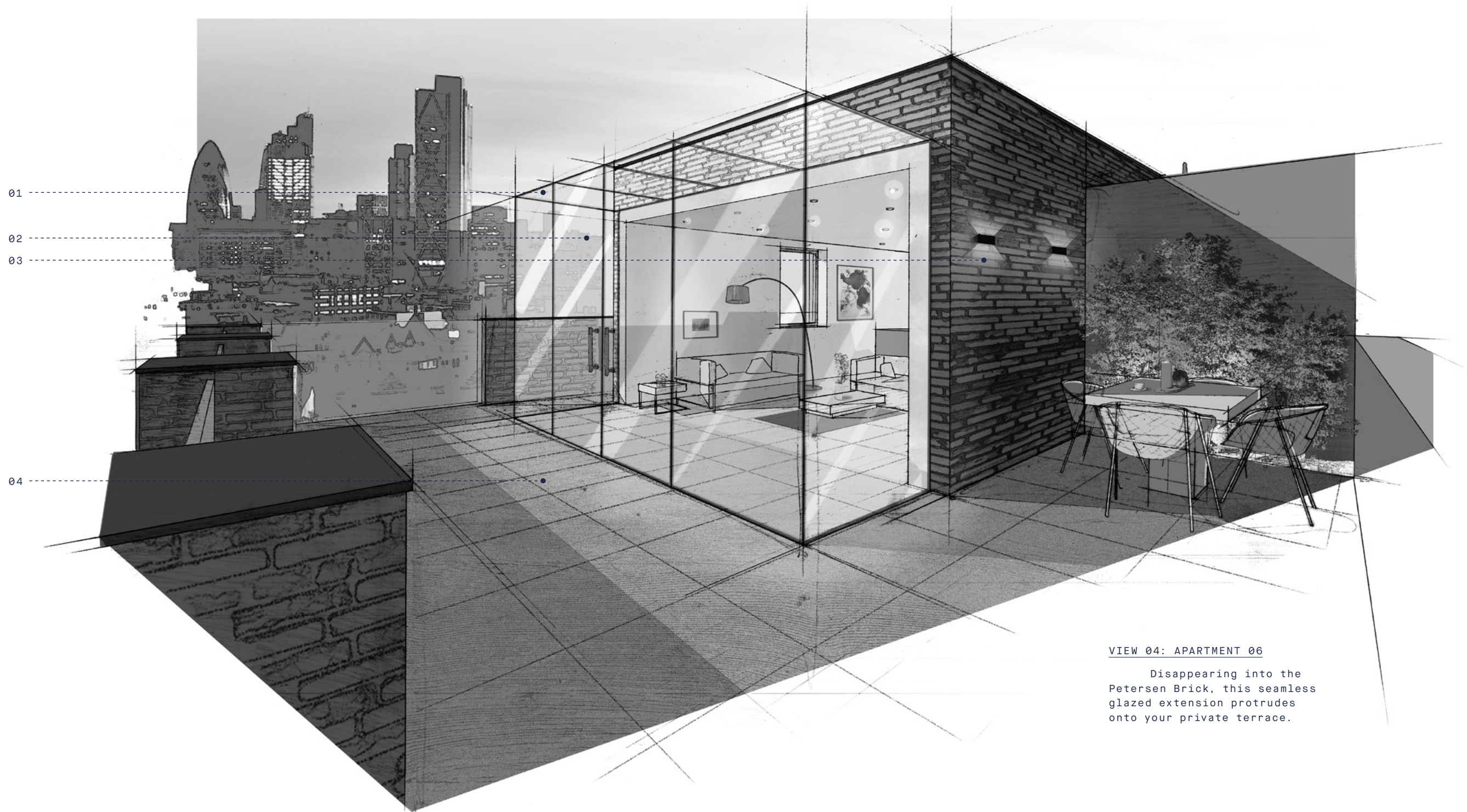
“SCP is a real shop. We do lighting and textiles, ceramics, plus furniture. And we’ve collaborated right from the start. Interior designers and architects were our first customers really. There are a lot of key people we’ve worked with who we always work with, but we tend not to do the whole job. But to actually work on something as local as The Hudson, where we’re involved in the whole project? This is a very nice idea.”



WITH CONVICTION

Coakley believes in form following function, giving longevity to beautiful design. A principle that applies no less to his work with The Hudson.

- 01 GLASS BOX
- 02 OVERSIZED GLAZED DOORS
- 03 AMBIENT UP/DOWN LIGHTING
- 04 PRIVATE TERRACE



VIEW 04: APARTMENT 06

Disappearing into the Petersen Brick, this seamless glazed extension protrudes onto your private terrace.

COVETED DETAIL

Staying true to the techniques of yesteryear, Catchpole & Rye is a modern-day maker producing old-school style. With a nod to history, high-level cisterns – each cast with The Hudson name – have journeyed from Kent to Curtain Road, bringing not only a hand finished quality by skilled craftsmen but a century-old heritage.

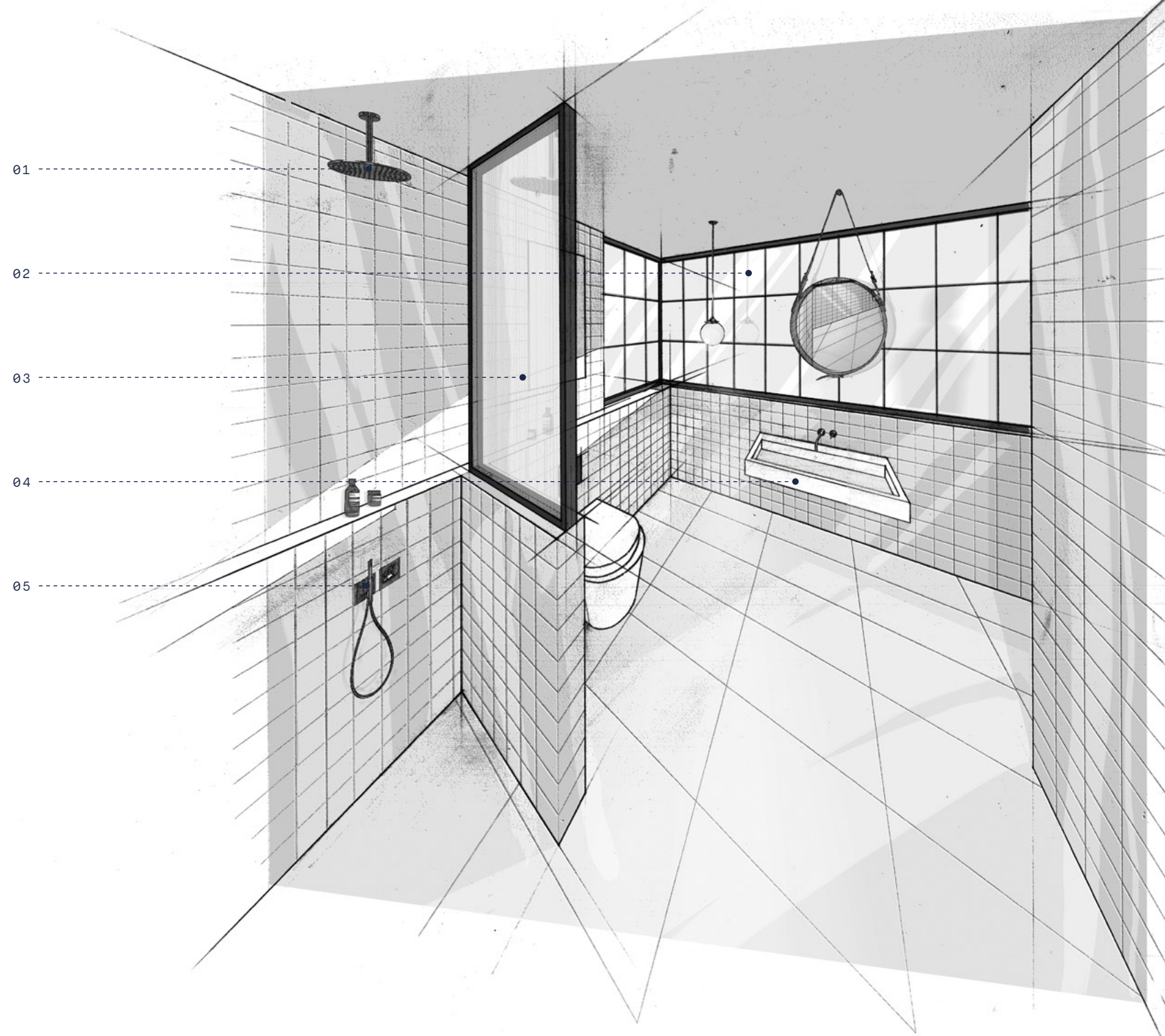
Creating a harmonious contrast, brassware by Brooklyn-based Watermark. Utilising advanced technologies and vintage machines to create strikingly uncommon products, inspiration is drawn from architectural details and engineering structures. Each piece is conceptualised in collaboration with architects and designers, and brought to life by the knowing hands of Brooklyn artisans.



TIMELESS

Cisterns will bear The Hudson name, their identity branded in time. The exclusive design is carved from wood, sand moulds are manufactured, then finally the cistern is cast.

VIEW 05: APARTMENT 06, BATHROOM



WALLS OF LIGHT

Fluted glass partitions separate spaces, offering privacy without restricting light. Specifically chosen for their highly refined finish, aluminium frames provide a contemporary edge to these industrial-inspired features.

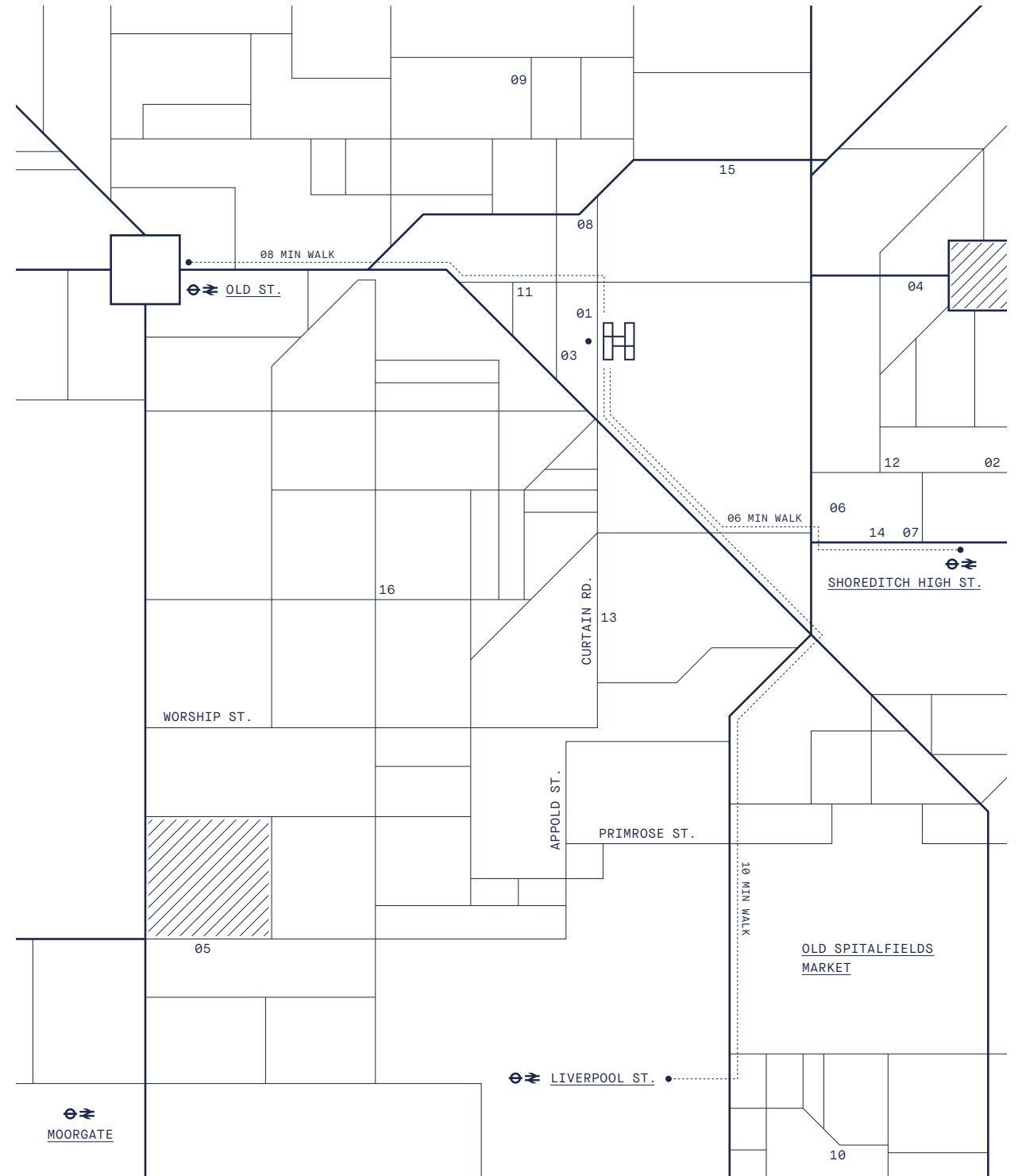
- 01 SUSPENDED SHOWER HEAD
- 02 FLUTED GLASS CRITTALL-STYLE WALL
- 03 TRANSLUCENT GLAZED SCREEN
- 04 OVERSIZED HAND BASIN
- 05 BATON HAND SHOWER

CONNECTED

SHOREDITCH HIGH ST.	HOXTON	03 MINUTES
	HAGGERSTON	04 MINUTES
	DALSTON JUNCTION	06 MINUTES
	CANONBURY	09 MINUTES
	HIGHBURY & ISLINGTON	15 MINUTES
OLD ST.	LONDON BRIDGE	09 MINUTES
	BANK	05 MINUTES
	MOORGATE	02 MINUTES
	ANGEL	02 MINUTES
LIVERPOOL ST.	KING'S CROSS ST. PANCRAS	09 MINUTES
	STRATFORD	07 MINUTES
	ST. PAUL'S	06 MINUTES
	CHANCERY LANE	08 MINUTES
	HOLBORN	09 MINUTES
	OXFORD CIRCUS	13 MINUTES

LOCATION

01 SCP	09 HAPPINESS FORGETS
02 LE LABO	10 RAVEN ROW
03 MERCHANTS TAVERN	11 TRAMSHED
04 CALVERT 22 FOUNDATION	12 BOUNDARY
05 BLOOMBERG SPACE	13 RÖK SMOKEHOUSE
06 HALES GALLERY	14 LYLE'S
07 COWSHED	15 CLOVE CLUB
08 GOODHOOD	16 SIGNAL GALLERY



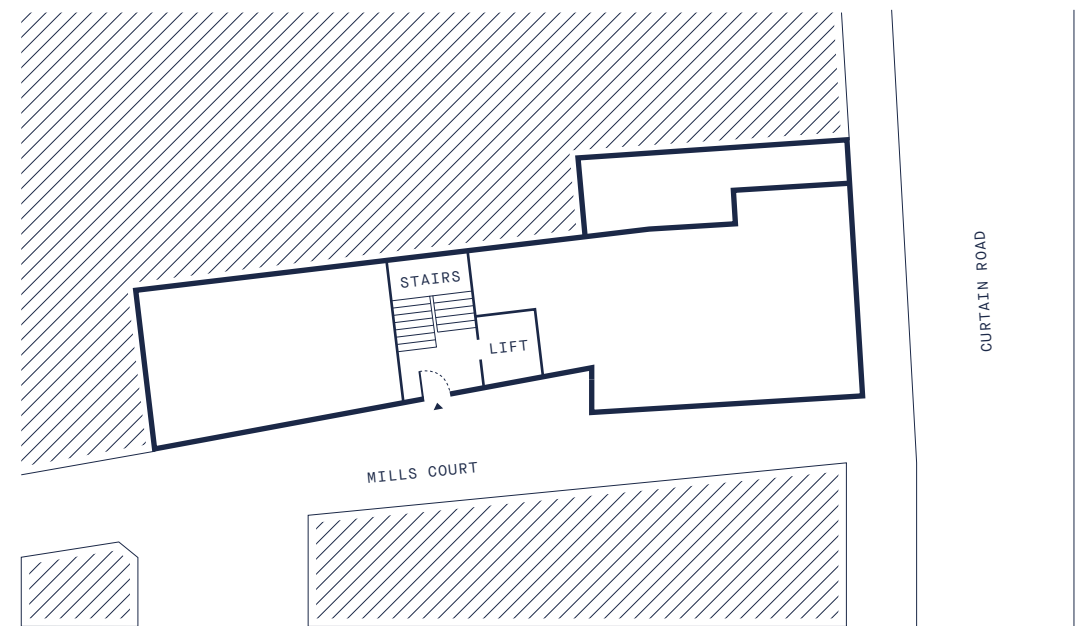
THE DEVELOPMENT

Six apartments, each a culmination of carefully chosen materials, precision manufacturing and fittings sourced from the epicentres of design.

SCHEDULE OF AREAS

	SQ M	SQ FT
APARTMENT 01	69	743
APARTMENT 02	83	894
APARTMENT 03	69	743
APARTMENT 04	69	743
APARTMENT 05	84	904
APARTMENT 06	122	1313

SITE OVERVIEW



^ NORTH

GENERAL

UNIQUE HANDMADE BRICK BLEND BY PETERSEN

FEATURE EXPOSED CONCRETE SOFFITS ILLUMINATED WITH AMBIENT LIGHTING

CRITTALL-STYLE GLAZED SCREENS

INDIVIDUALLY DESIGNED LOFT STYLE KITCHENS

BESPOKE CABINETRY BY NEATSMITH OF LONDON DESIGNED EXCLUSIVELY FOR THE HUDSON

ZONED UNDERFLOOR HEATING THROUGHOUT

KITCHEN

MODULNOVA KITCHEN BY DESIGN SPACE LONDON

SATIN LACQUERED DOORS WITH GREY LINEN INTERNAL CARCASS

ULTRA-THIN CORIAN WORKTOPS WITH INTEGRATED UNDER MOUNTED SINK

FULLY INTEGRATED SIEMENS APPLIANCES (MIELE TO PENTHOUSES) INCLUDING: FRIDGE/FREEZER, OVEN, MICROWAVE OVEN, DISHWASHER & EXTRACTOR FAN

INDUCTION HOBBS

INTEGRATED WINE COOLERS

SIEMENS WASHER/DRYER LOCATED IN STORE CUPBOARDS

RECESSED LED LIGHTING STRIP LIGHTING

BATHROOMS

BATHROOMS DESIGNED BY SOPHIE SMITH

BRASSWARE BY THE WATERMARK COLLECTION TO MASTER EN-SUITES

BRASSWARE BY HANSGROHE TO ALL OTHER BATHROOMS

SANITARY WARE & VANITY UNITS BY DURAVIT

TRADITIONAL STYLE HIGH LEVEL CISTERN TOILETS BY CATCHPOLE & RYE

TILED BATH & SHOWER ROOMS ALL WITH ILLUMINATED NICHES

SEPARATE UNDERFLOOR HEATING CONTROL TO MASTER EN-SUITES

DOORS

OVERSIZED BLACK FRONT DOOR SET

OVERSIZED BLACK INTERNAL DOORS

MATTE BLACK DOOR FURNITURE

SPECIALLY DESIGNED STYLISED INTERNAL CRITTALL-STYLE DOORS AND WALLS

FLOORING

ENGINEERED WOOD FLOORING COMPRISED OF A BESPOKE BLEND OF BOARD WIDTHS THROUGHOUT

EXTERNAL FLOORING DECKING OR TILES

ELECTRONICS & ENTERTAINMENT

ARCHITECTURAL MATTE BLACK TRACK LIGHTS TO EXPOSED CONCRETE

TOUCH SCREEN THERMOSTATS THROUGHOUT

ENERGY EFFICIENT LED DOWNLIGHTS

FUTURE PROOFED FOR AUDIO SYSTEM

SECURITY

FULLY FITTED ALARM

SMOKE & HEAT DETECTORS

FULLY DESIGNED EXTERNAL LIGHTING SCHEME

DOOR ENTRY SYSTEM WITH FLUSH COLOUR MONITOR

ALL FRONT DOORS EQUIPPED WITH SECURE DEAD LOCK

SECURITY FOB ENABLED ENTRY TO BUILDING

10 YEAR NEW HOME WARRANTY BY BLP

<u>APARTMENT 01</u>	69 SQ M	743 SQ FT
LIVING/KITCHEN	5.0M X 4.9M	16.4FT X 16.2FT
BEDROOM 01	4.1M X 2.7M	13.5FT X 8.7FT
EN-SUITE	2.5M X 1.3M	8.2FT X 4.3FT
DINING/BEDROOM 02	4.1M X 2.6M	13.5FT X 8.5FT
SHOWER ROOM	2.8M X 1.0M	9.2FT X 3.3FT
BALCONY	4.0M X 1.3M	13.1FT X 4.3FT

SPECIAL FEATURES

KITCHEN TO INCORPORATE CONTEMPORARY OPEN SHELVING SYSTEM WITH LACQUERED STORAGE PODS

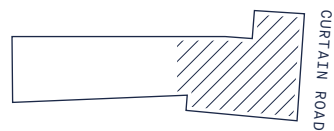
PETERSEN BRICK CONTINUES INTERNALLY CREATIVELY ILLUMINATED WITH AMBIENT LED STRIP LIGHTING

ADAPTABLE ARCHITECTURAL CONTEMPORARY TRACK LIGHTING SUSPENDED FROM CONCRETE SOFFITS

METAL GLAZED DIVIDING SCREENS



LOCATION



APARTMENT 02	83 SQ M	894 SQ FT
LIVING/KITCHEN/DINING	7.3M X 4.0M	24.0FT X 13.1FT
WC	2.9M X 1.4M	9.5FT X 4.6FT
BALCONY	3.2M X 1.1M	10.5FT X 3.6FT
BEDROOM 01	4.1M X 3.2M	13.5FT X 10.5FT
EN-SUITE	3.4M X 1.5M	11.2FT X 4.9FT
BEDROOM 02	4.4M X 2.8M	14.4FT X 9.2FT
EN-SUITE	2.2M X 2.1M	7.2FT X 6.9FT

SPECIAL FEATURES

KITCHEN TO INCORPORATE CONTEMPORARY OPEN SHELVING SYSTEM WITH LACQUERED STORAGE PODS

PETERSEN BRICK CONTINUES INTERNALLY CREATIVELY ILLUMINATED WITH AMBIENT LED STRIP LIGHTING

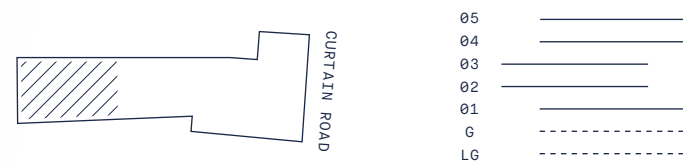
DUPLEX APARTMENTS TO BENEFIT FROM RECESSED VIDEO DOOR ENTRY ON BOTH LEVELS

COFFERED CEILING WITH LED DETAIL ILLUMINATING EXPOSED CONCRETE CEILING

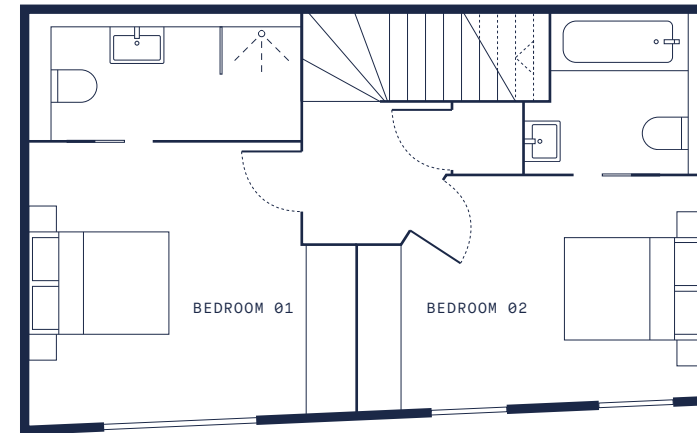
FEATURE CRITTALL-STYLE GLAZED WALL

DOUBLE HEIGHT EXPOSED CONCRETE WALL

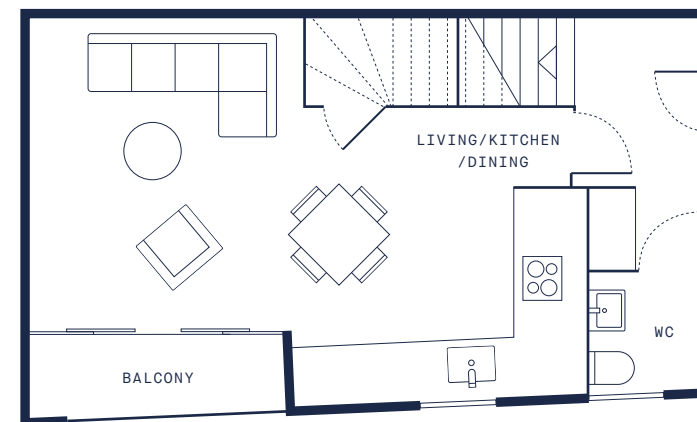
LOCATION



UPPER LEVEL



LOWER LEVEL



<u>APARTMENT 03</u>	69 SQ M	743 SQ FT
LIVING/KITCHEN	5.0M X 4.9M	16.4FT X 16.2FT
BEDROOM 01	4.1M X 2.7M	13.5FT X 8.7FT
EN-SUITE	2.5M X 1.3M	8.2FT X 4.3FT
DINING/BEDROOM 02	4.1M X 2.6M	13.5FT X 8.5FT
SHOWER ROOM	2.8M X 1.0M	9.2FT X 3.3FT
BALCONY	4.0M X 1.3M	13.1FT X 4.3FT

SPECIAL FEATURES

KITCHEN TO INCORPORATE CONTEMPORARY OPEN SHELVING SYSTEM WITH LACQUERED STORAGE PODS

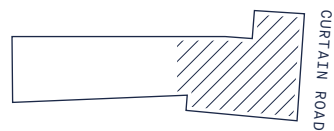
PETERSEN BRICK CONTINUES INTERNALLY CREATIVELY ILLUMINATED WITH AMBIENT LED STRIP LIGHTING

ADAPTABLE ARCHITECTURAL CONTEMPORARY TRACK LIGHTING SUSPENDED FROM CONCRETE SOFFITS

METAL GLAZED DIVIDING SCREENS



LOCATION



<u>APARTMENT 04</u>	69 SQ M	743 SQ FT
LIVING/KITCHEN	5.0M X 4.9M	16.4FT X 16.2FT
BEDROOM 01	4.1M X 2.7M	13.5FT X 8.7FT
EN-SUITE	2.5M X 1.3M	8.2FT X 4.3FT
DINING/BEDROOM 02	4.1M X 2.6M	13.5FT X 8.5FT
SHOWER ROOM	2.8M X 1.0M	9.2FT X 3.3FT
BALCONY	4.0M X 1.3M	13.1FT X 4.3FT

SPECIAL FEATURES

KITCHEN TO INCORPORATE CONTEMPORARY OPEN SHELVING SYSTEM WITH LACQUERED STORAGE PODS

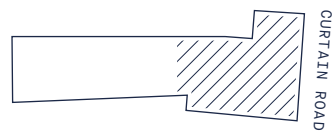
PETERSEN BRICK CONTINUES INTERNALLY CREATIVELY ILLUMINATED WITH AMBIENT LED STRIP LIGHTING

ADAPTABLE ARCHITECTURAL CONTEMPORARY TRACK LIGHTING SUSPENDED FROM CONCRETE SOFFITS

METAL GLAZED DIVIDING SCREENS



LOCATION



<u>APARTMENT 05</u>	84 SQ M	904 SQ FT
LIVING/KITCHEN/DINING	8.9M X 4.7M	29.2FT X 15.4FT
BEDROOM 01	5.3M X 4.9M	17.4FT X 16.1FT
EN-SUITE	2.2M X 2.0M	7.4FT X 6.6FT
BEDROOM 02	3.3M X 2.6M	10.9FT X 8.5FT
BATHROOM	3.0M X 1.7M	9.8FT X 5.6FT
TERRACE	4.5M X 2.1M	14.8FT X 6.9FT

SPECIAL FEATURES

RAVEN BLACK CAESAR STONE SURFACE ENCASING FEATURE BLOCK ISLAND

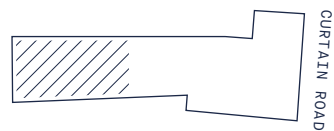
KITCHEN ISLAND ILLUMINATED BY LARGE FEATURE SKY LIGHT
FLOODING THE KITCHEN WITH AN ABUNDANCE OF NATURAL LIGHT

GLACIER WHITE CORIAN SEAMLESS WORKTOP AND SPLASHBACK

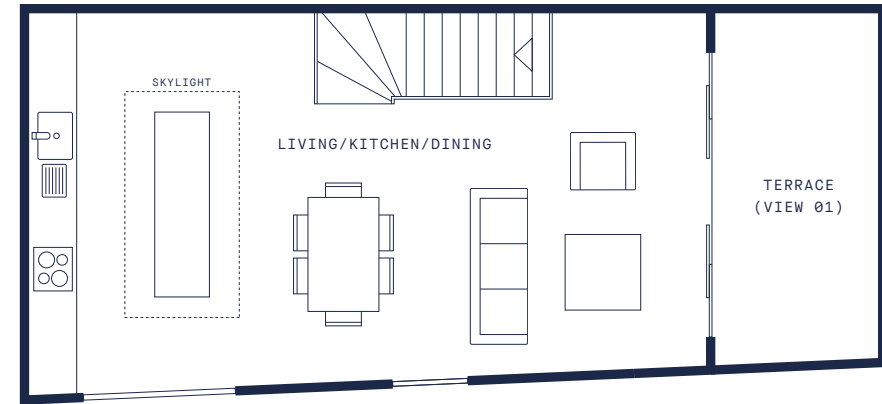
FULLY PRIVATE TERRACE

FLOOR TO CEILING GLAZED WALL TO BALCONY TO BLEND
OUTDOOR/INDOOR LIVING

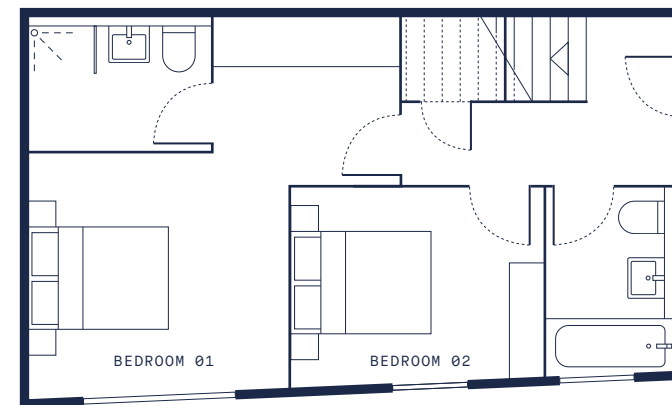
LOCATION



UPPER LEVEL



LOWER LEVEL

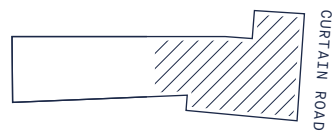


<u>APARTMENT 06</u>	122 SQ M	1313 SQ FT
LIVING/KITCHEN/DINING	9.1M X 4.7M	29.9FT X 15.4FT
BEDROOM 01	5.3M X 3.2M	17.4FT X 10.5FT
DRESSING ROOM	2.7M X 2.2M	8.9FT X 7.2FT
EN-SUITE	2.4M X 2.1M	7.9FT X 6.9FT
BEDROOM 02	3.9M X 3.8M	12.8FT X 12.5FT
BEDROOM 03	3.8M X 3.8M	12.5FT X 12.5FT
BATHROOM	2.2M X 2.1M	7.2FT X 6.9FT
TERRACE	9.2M X 9.6M	30.2FT X 31.5FT

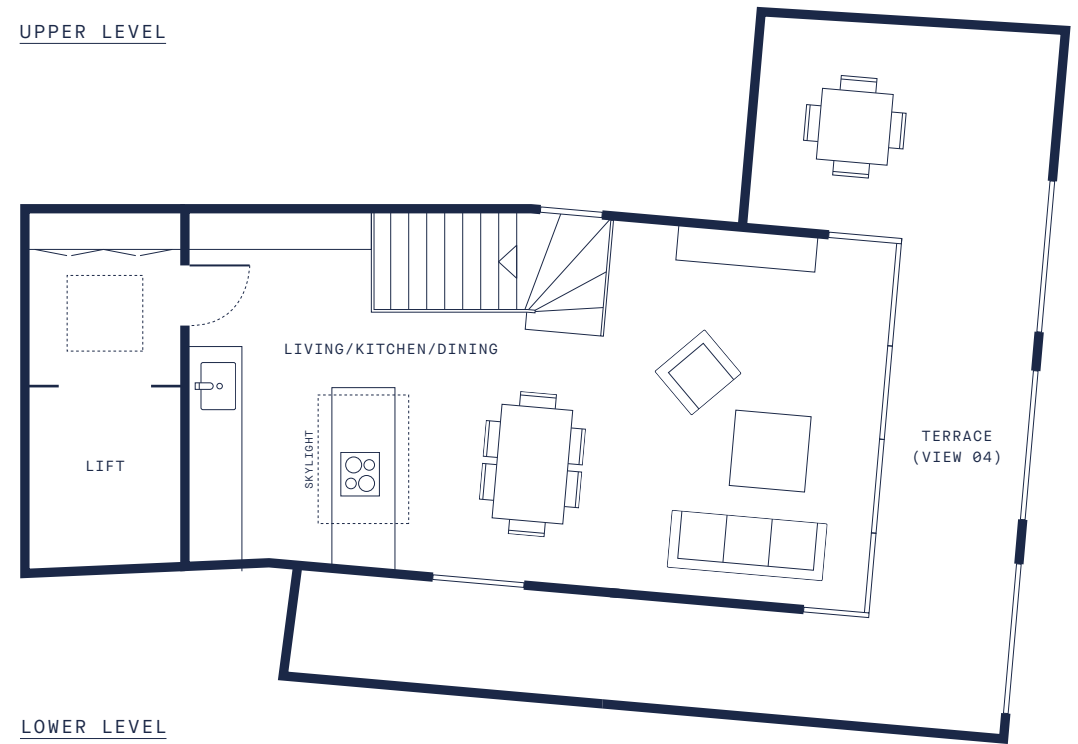
SPECIAL FEATURES

- WALK IN SHOWER IN METAL GLAZED LIGHT BOX
- PENTHOUSE TO BENEFIT FROM RECESSED VIDEO DOOR ENTRY ON BOTH LEVELS
- RAVEN BLACK CAESAR STONE SURFACE ENCASING FEATURE BLOCK ISLAND
- LIFT ACCESS DIRECTLY INTO UPPER LEVEL PRIVATE LOBBY
- GLASS BOX EXTENDING THE LIVING SPACE TO TERRACE BLURRING THE LINES BETWEEN INDOOR AND OUTDOOR

LOCATION



UPPER LEVEL



LOWER LEVEL



^ NORTH



HAMILTON COURT DEVELOPMENTS

Our projects are crafted from our passion for creativity, innovation and collaboration. The Hudson effortlessly maximises creative spaces with the most innovative design. Having scoured the globe for the best materials as well as collaborating with exceptional home grown talent, Hamilton Court Developments seeks to push the boundaries of conventional developments to create remarkable and unique living spaces which are inspired by and focused on Design.

Our reputation is achieved through our professionalism and commitment to delivering the highest quality of service and product, our attention to detail is with the end user in mind which ensures the highest standards of finish both inside and out.

Our unique team comprises of handpicked experts in their fields who are constantly looking forward in order to create spaces that surpass conventional design benchmarks. We have cultivated a creative environment of unquestionable passion for quality, and with the wealth of our combined experience we know that we have the expertise, knowledge and understanding to develop outstanding homes.

MISREPRESENTATION ACT: These particulars are not to be considered as a formal offer, they are for information only and give a general idea of the property. They are not to be taken as forming any part of a resulting contract, nor to be relied upon as statements or representations of fact. Whilst every care has been taken in their preparation, no liability can be accepted for their inaccuracy. Intending purchasers must satisfy themselves by personal inspection or otherwise as to the correctness of these particulars which are issued on the understanding that all negotiations are conducted through the developer or its agent. These particulars are correct at time of issue. In view of our continuing aim to improve our developments the detailed specification and/or layouts may change. If any points are important please clarify with us prior to viewing. These particulars are issued strictly on the basis that no visits to site will be made unless accompanied by the selling agent.

Don't Panic[®]
PARTNERS

Branding and design by Don't Panic Partners
dontpanicpartners.com



HAMILTON COURT
DEVELOPMENTS

hcdevelopments.com

115 CURTAIN ROAD
SHOREDITCH
LONDON EC2A 3BS

thehudsonshoreditch.com